

3/16 Boltmaker - Inch

Part Number	Nominal Hex A/F	Hex A/F (inch)	Hex A/F (mm)	Hex A/C (inch)	Hex A/C (mm)	Short Bolts
BM-3-4	1/4	.244/.246	6.20/6.25	.279	7.08	BM-3-4-N
BM-3-5	5/16	.305/.307	7.75/7.80	.348	8.85	BM-3-5-N
BM-3-6	3/8	.366/.368	9.30/9.35	.417	10.61	BM-3-6-N
BM-3-7	7/16	.428/.430	10.87/10.92	.488	12.40	BM-3-7-N
BM-3-8	1/2	.489/.491	12.42/12.47	.557	14.17	BM-3-8-N

3/16 Boltmaker - Metric

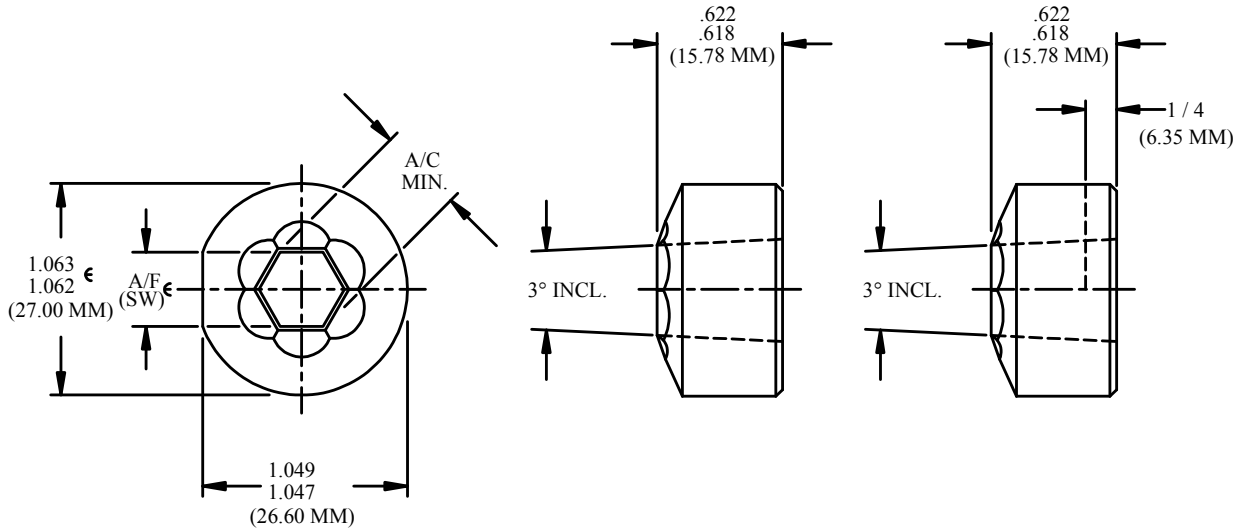
Part Number	Nominal Hex A/F	Hex A/F (inch)	Hex A/F (mm)	Hex A/C (inch)	Hex A/C (mm)	Short Bolts
BM-3-5MM	5MM	.190/.192	4.82/4.87	.217	5.52	BM-3-5-MM-N
BM-3-5.5MM	5.5MM	.210/.212	5.33/5.38	.240	6.10	BM-3-5.5MM-N
BM-3-6MM	6MM	.230/.232	5.84/5.89	.263	6.68	BM-3-6MM-N
BM-3-7MM	7MM	.268/.270	6.81/6.86	.306	7.77	BM-3-7MM-N
BM-3-8MM	8MM	.307/.309	7.80/7.85	.350	8.90	BM-3-8MM-N
BM-3-9MM	9MM	.347/.349	8.81/8.86	.396	10.06	BM-3-9MM-N
BM-3-10MM	10MM	.386/.388	9.80/9.85	.440	11.19	BM-3-10MM-N

1. Trim die material:

- M2 at RC 62-64
- M4 at RC 62-64

2. Special shapes (Round, Square, 12 Point, etc.) also available per quote.

3. PVD and CVD coatings available.



1/4 Boltmaker - Inch

Part Number	Nominal A/F	Hex A/F (inch)	Hex A/F (mm)	Hex A/C (inch)	Hex A/C (mm)	Short Bolts
BM-4-4	1/4	.244/.246	6.20/6.25	.279	7.08	BM-4-4-N
BM-4-5	5/16	.305/.307	7.75/7.80	.348	8.85	BM-4-5-N
BM-4-6	3/8	.366/.368	9.30/9.35	.417	10.61	BM-4-6-N
BM-4-7	7/16	.428/.430	10.87/10.92	.488	12.40	BM-4-7-N
BM-4-8	1/2	.489/.491	12.42/12.47	.557	14.17	BM-4-8-N

1/4 Boltmaker - Metric

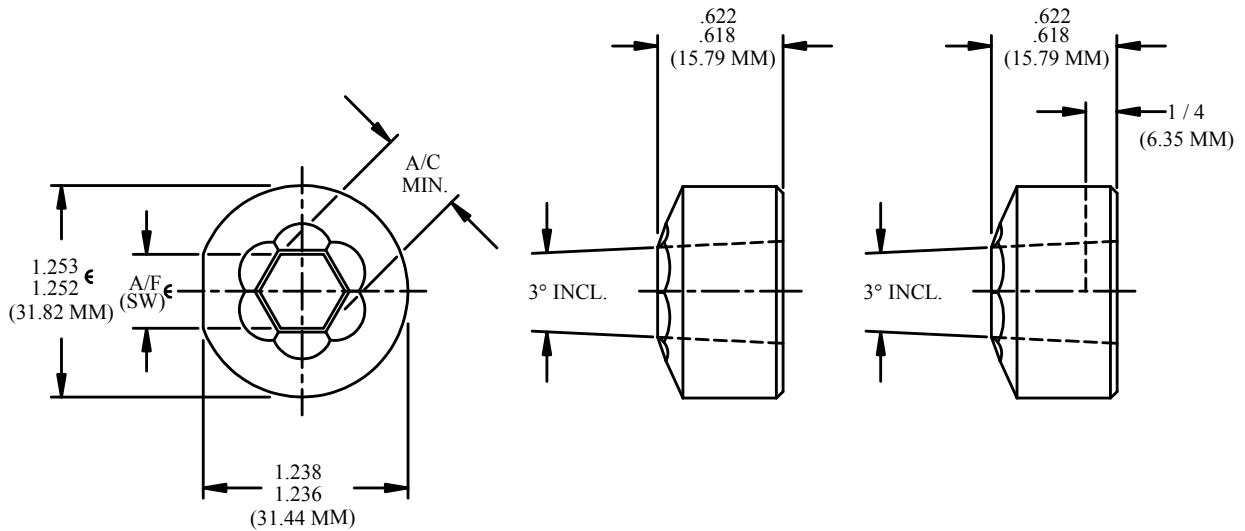
Part Number	Nominal A/F	Hex A/F (inch)	Hex A/F (mm)	Hex A/C (inch)	Hex A/C (mm)	Short Bolts
BM-4-7MM	7MM	.268/.270	6.80/6.85	.306	7.77	BM-4-7MM-N
BM-4-8MM	8MM	.307/.309	7.80/7.85	.350	8.90	BM-4-8MM-N
BM-4-10MM	10MM	.386/.388	9.80/9.85	.440	11.19	BM-4-10MM-N
BM-4-11MM	11MM	.424/.426	10.78/10.82	.483	12.29	BM-4-11MM-N
BM-4-12MM	12MM	.463/.465	11.76/11.81	.528	13.41	BM-4-12MM-N
BM-4-13MM	13MM	.502/.504	12.75/12.80	.572	14.54	BM-4-13MM-N

1. Trim die material:

- M2 at RC 62-64
- M4 at RC 62-64

2. Special shapes (Round, Square, 12 Point, etc.) also available per quote.

3. PVD and CVD coatings available.



5/16 Boltmaker - Inch

Part Number	Nominal H A/F	Hex A/F (inch)	Hex A/F (mm)	Hex A/C (inch)	Hex A/C (mm)	Short Bolts
BM-5-7	7/16	.428/.430	10.87/10.92	.488	12.40	BM-5-7-N
BM-5-8	1/2	.489/.491	12.42/12.47	.557	14.17	BM-5-8-N
BM-5-9	9/16	.551/.553	13.99/14.05	.628	15.96	BM-5-9-N

5/16 Boltmaker - Metric

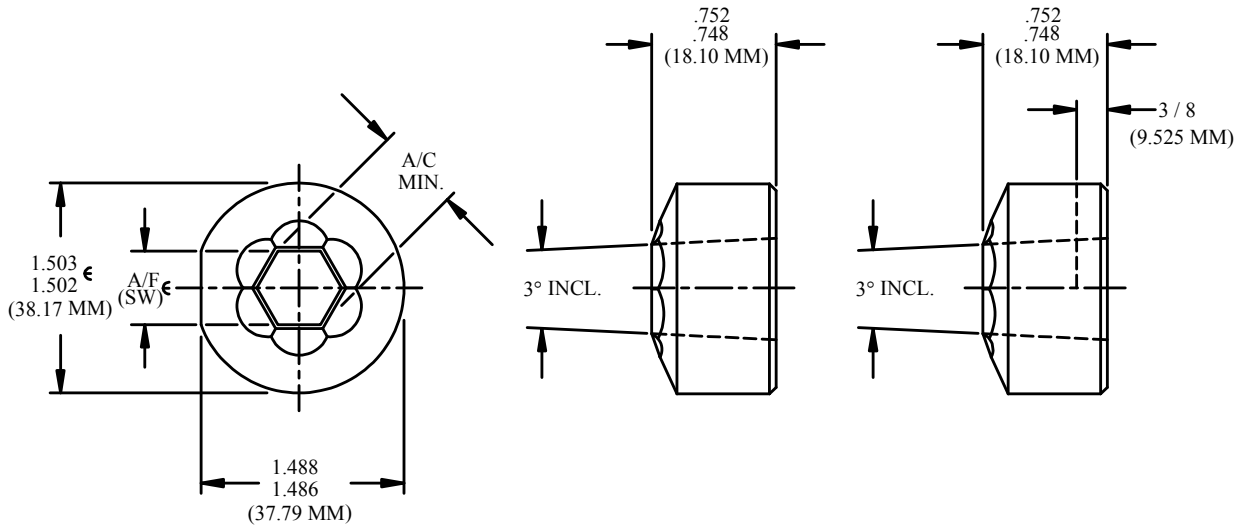
Part Number	Nominal H A/F	Hex A/F (inch)	Hex A/F (mm)	Hex A/C (inch)	Hex A/C (mm)	Short Bolts
BM-5-7MM	7MM	.268/.270	6.80/6.85	.306	7.77	BM-5-7MM-N
BM-5-8MM	8MM	.307/.309	7.80/7.85	.350	8.90	BM-5-8MM-N
BM-5-10MM	10MM	.386/.388	9.80/9.85	.440	11.19	BM-5-10MM-N
BM-5-11MM	11MM	.424/.426	10.78/10.82	.483	12.29	BM-5-11MM-N
BM-5-12MM	12MM	.463/.465	11.76/11.81	.528	13.41	BM-5-12MM-N
BM-5-13MM	13MM	.502/.504	12.75/12.80	.572	14.54	BM-5-13MM-N
BM-5-14MM	14MM	.543/.545	13.79/13.84	.619	15.73	BM-5-14MM-N

1. Trim die material:

- M2 at RC 62-64
- M4 at RC 62-64

2. Special shapes (Round, Square, 12 Point, etc.) also available per quote.

3. PVD and CVD coatings available.



3/8 Boltmaker - Inch

Part Number	Nominal A/F	Hex A/F (inch)	Hex A/F (mm)	Hex A/C (inch)	Hex A/C (mm)	Short Bolts
BM-6-8	1/2	.489/.491	12.42/12.47	.557	14.17	BM-6-8-N
BM-6-9	9/16	.551/.553	13.99/14.05	.628	15.96	BM-6-9-N

3/8 Boltmaker - Metric

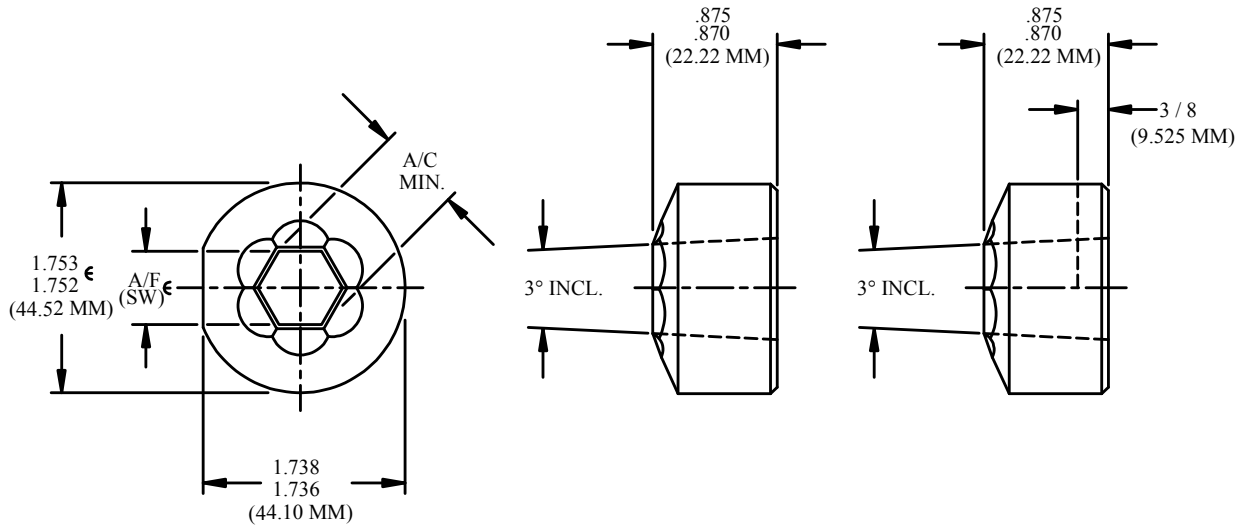
Part Number	Nominal A/F	Hex A/F (inch)	Hex A/F (mm)	Hex A/C (inch)	Hex A/C (mm)	Short Bolts
BM-6-10MM	5/8	.612/.614	15.54/15.59	.698	17.72	BM-6-10-N
BM-6-13MM	13MM	.502/.504	12.75/12.80	.572	14.54	BM-6-13MM-N
BM-6-14MM	14MM	.543/.545	13.79/13.84	.619	15.73	BM-6-14MM-N
BM-6-15MM	15MM	.583/.585	14.80/14.85	.664	16.88	BM-6-15MM-N
BM-6-16MM	16MM	.620/.622	15.75/15.80	.707	17.95	BM-6-16MM-N
BM-6-17MM	17MM	.661/.663	16.79/16.84	.753	19.14	BM-6-17MM-N

1. Trim die material:

- M2 at RC 62-64
- M4 at RC 62-64

2. Special shapes (Round, Square, 12 Point, etc.) also available per quote.

3. PVD and CVD coatings available.



1/2 Boltmaker - Inch

Part Number	Nominal A/F	Hex A/F (inch)	Hex A/F (mm)	Hex A/C (inch)	Hex A/C (mm)	Short Bolts
BM-8-11	11/16	.674/.676	17.12/17.17	.768	19.52	BM-8-11-N
BM-8-12	3/4	.736/.738	18.69/18.74	.839	21.31	BM-8-12-N
BM-8-13	13/16	.798/.800	20.27/20.32	.909	23.08	BM-8-13-N
BM-8-14	7/8	.860/.862	21.84/21.89	.980	24.90	BM-8-14-N
BM-8-15	15/16	.922/.924	23.42/23.47	1.051	26.71	BM-8-15-N

1/2 Boltmaker - Metric

Part Number	Nominal A/F	Hex A/F (inch)	Hex A/F (mm)	Hex A/C (inch)	Hex A/C (mm)	Short Bolts
BM-8-17MM	17MM	.661/.663	16.79/16.84	.753	19.14	BM-8-17MM-N
BM-8-18MM	18MM	.699/.701	17.75/17.80	.797	20.24	BM-8-18MM-N
BM-8-19MM	19MM	.735/.737	18.67/18.72	.838	21.28	BM-8-19MM-N
BM-8-21MM	21MM	.815/.817	20.70/20.75	.929	23.59	BM-8-21MM-N
BM-8-22MM	22MM	.853/.855	21.67/21.72	.972	24.69	BM-8-22MM-N
BM-8-23MM	23MM	.895/.897	22.73/22.78	1.020	25.92	BM-8-23MM-N
BM-8-24MM	24MM	.933/.935	23.70/23.75	1.063	27.00	BM-8-24MM-N

1. Trim die material:

- M2 at RC 62-64
- M4 at RC 62-64

2. Special shapes (Round, Square, 12 Point, etc.) also available per quote.

3. PVD and CVD coatings available.